

Polypectomy



US endoscopy

*listening...and delivering solutions**

Polypectomy

US Endoscopy offers an extensive line of polypectomy devices. From a purpose-built cold snare to a monofilament EMR device, we offer a product solution to accommodate a variety of needs.

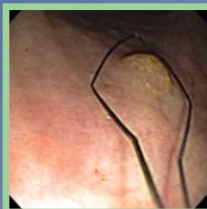
Exacto® cold snare

Studies have shown that using the purpose-built Exacto® cold snare results in a higher complete resection rate compared to traditional braided wire snares¹.

wire diameter is 33% thinner than traditional braided wires allowing for full circumferential resection of polyps

shield shape and mini snare size offers more control for placement and resection of small polyps

reduces polyp "fly away" from the resection site making it easier to collect specimen for pathology²



Placement of the Exacto® snare around polyp



Cold snaring with the Exacto® snare



Clean cut at resection site with Exacto® snare

¹ A. Horuchi, K. Hosoi, M. Kajiyama, N. Tanaka, K. Sano, D. Graham. "Prospective, randomized comparison of 2 methods of cold snare polypectomy for small colorectal polyps." GIE Journal Online, 2015.

² S. Din, A. Ball, S. Riley, P. Kirtsanta, S. Johal. "Cold snare polypectomy: Does snare type influence outcomes?" Digestive

Lariat® snare

The multi-functional design of the Lariat® snare helps address a variety of resection needs including piecemeal resection and multiple polyps.

three distinct sizes and shapes eliminate the need to exchange snares

snare loop design maintains its shape and integrity after multiple resections



NEW!

iSnare® system

The iSnare® system is a family of unique, multi-functional devices ideal for minimizing procedure time by eliminating device exchanges and optimizing clinical outcomes during submucosal injection polypectomy procedures.

features alternating injection needle and snare operated by a multi-functional handle

enables immediate snaring to avoid cushion / bleb absorption

available in three unique snare options including the new multi-stage Lariat® snare



Histolock® resection device

The Histolock® resection device features a stiff monofilament wire to help recruit and resect flat tissue during complex polypectomy procedures.

twisted wire that lays flat on the mucosa during resection

mini snare size that offers easy maneuverability for controlled placement and precise resection

Histolock
resection device

Histolock® resection kit

The Histolock® resection device is also available in a convenient EMR kit which includes the needed polypectomy and tissue retrieval devices for challenging cases...



5-piece kit

- *Histolock® resection device*
- *Carr-Locke injection needle*
- *Roth Net® retriever - polyp*
- *eTrap® polyp trap*
- *Mio® medical device organizer*

Polyp Retrieval

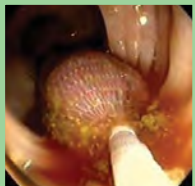
Roth Net® retrievers

From capturing large polyps to securing multiple polyp fragments, the Roth Net® retriever is a device you can count on for consistent performance. Our all-encompassing line of retrieval nets are designed to...

quickly and easily retrieve multiple, large or piecemeal polyps

preserve specimens for histology

allow for continued examination with clear visibility



Roth Net® retrieval of large polyp



Roth Net® retrieval of multiple polyps/polyp fragments



EMR specimen removal with Roth Net® retriever



eTrap[®] polyp trap

Allows for quick and accurate retrieval of multiple specimens, while safeguarding clinicians from unnecessary exposure to biomaterials.

collect multiple polyps with uninterrupted suction

simple transport and preservation of specimens

magnifying window allows easy visualization of the collected specimen



includes 2 trays

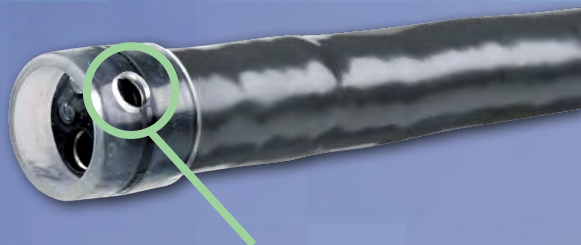


Reveal[®] distal attachment cap

The Reveal[®] distal attachment cap is designed to facilitate the endoscope's view during polypectomy procedures.

helps avoid 'red out' by maintaining a constant distance between the endoscope and mucosa

can be used with other polypectomy devices, including snares and needles



side hole allows for constant drainage of fluid



product information

product number	description	needle gauge/ projection	sheath diameter (mm)	length (cm)	approximate snare size (mm)	units/box
polypectomy snares						
BX00711018	Short Throw [™] snare - mini	-	2.4	230	12.5 x 30	10
BX00711019	Short Throw [™] snare - standard oval	-	2.4	230	25 x 54	10
BX00711084	iSnare [®] system - Lariat [®] snare	23 gauge x 5mm	2.5	230	oval: 30 x 50 hex: 10 x 28 diamond: 6 x 15	5
BX00711085	iSnare [®] system - oval	23 gauge x 5mm	3.0	230	25 x 40	5
BX00711086	iSnare [®] system - oval	25 gauge x 5mm	3.0	230	25 x 40	5
BX00711088	iSnare [®] system - hexagonal	25 gauge x 5mm	3.0	230	25 x 40	5
BX00711089	iSnare [®] system - hexagonal	23 gauge x 5mm	3.0	230	25 x 40	5
BX00711101	Short Throw [™] snare - standard oval	-	2.4	350	25 x 54	5
BX00711113	Traxtion [®] snare	-	2.4	230	25 x 40	10
BX00711115	Exacto [®] cold snare	-	2.4	230	9.0	10
BX00711117	Histolock [®] resection device	-	2.4	230	14 x 27	10
BX00711871*	Histolock [®] resection device	-	2.4	230	14 x 27	3
BX00711873	Histolock [®] resection kit-5 piece	-	-	-	-	3
BX00711119	Lariat [®] snare	-	2.4	230	oval: 30 x 50 hex: 10 x 28 diamond: 6 x 15	10
BX00711120	Rotator [™] snare - standard	-	2.4	230	25 x 54	10
BX00711121	Rotator [™] snare - mini	-	2.4	230	12.5 x 30	10
BX00711770	Reveal [®] distal attachment cap (sterile)	8.9-9.5mm endoscope tip OD	11.35mm cap OD	4mm	-	10
BX00711771	Reveal [®] distal attachment cap (sterile)	9.5-9.9mm endoscope tip OD	11.8mm cap OD	4mm	-	10
BX00711772	Reveal [®] distal attachment cap (sterile)	9.8-10.5mm endoscope tip OD	12.4mm cap OD	4mm	-	10
BX00711773	Reveal [®] distal attachment cap (sterile)	10.9-11.8mm endoscope tip OD	13.4mm cap OD	4mm	-	10
BX00711774	Reveal [®] distal attachment cap (sterile)	12.6-13.2mm endoscope tip OD	15.0mm cap OD	4mm	-	10
BX00711775	Reveal [®] distal attachment cap (sterile)	13.4-13.9mm endoscope tip OD	15.7mm cap OD	4mm	-	10
polypectomy retrieval						
BX00711050	Roth Net [®] retriever - standard	-	2.5	230	30 x 60	5
BX00711052	Roth Net [®] retriever - standard	-	2.5	230	30 x 60	10
BX00711099	eTrap [®] polyp trap	-	-	-	-	25
BX00711150	Roth Net [®] retriever - polyp	-	2.5	230	30 x 60	5
BX00711151	Roth Net [®] retriever - polyp	-	2.5	230	30 x 60	10
BX00711158	Roth Net [®] retriever - mini polyp	-	2.8	230	25 x 45	10
BX00711159	Roth Net [®] retriever - mini polyp (sterile)	-	2.8	230	25 x 45	5
BX00711162*	Roth Net [®] retriever - standard (sterile)	-	2.5	230	30 x 60	10
BX00711165*	Roth Net [®] retriever - maxi (sterile)	-	3.0	230	40 x 80	5
BX00711168*	Roth Net [®] retriever - mini	-	1.8	160	20 x 45	5
BX00711059	Roth Net [®] retriever - maxi	-	3.0	160	40 x 80	5
BX00715050/ BX00715060*	Roth Net [®] Platinum [®] retriever - universal	-	2.5	230	40 x 55	5
BX00715150/ BX00715160*	Roth Net [®] Platinum [®] retriever - polyp	-	3.0	230	40 x 55	5
BX00711152	Roth Net [®] retriever - enteroscopic	-	2.5	350	30 x 60	5
BX00711169*	Roth Net [®] retriever - select (sterile)	-	2.5	230	30 x 60	10
BX00711170	Roth Net [®] retriever - select	-	2.5	230	30 x 60	5

*sterile/not currently for sale in the U.S.

NEW!



US endoscopy

listening... and delivering solutions®

US Endoscopy is a subsidiary of STERIS Corporation.

©2017 US Endoscopy or its affiliates. All rights reserved.

Listening... and delivering solutions®, the US Endoscopy listening... and delivering solutions design, and all marks denoted with ® or ™ are registered with the U.S. Patent and Trademark Office, or trademarks owned by US Endoscopy.

5976 Heisley Road

Mentor, OH 44060

phone (1) 440 / 639-4494

fax (1) 440 / 639-4495

customer service (1) 800 / 769-8226

www.usendoscopy.com