

# Polypectomy

*and polyp retrieval*



# Polypectomy

US Endoscopy offers an extensive and unique line of polypectomy devices. From cold snaring to advanced polypectomy, there is a product solution to accommodate a variety of needs.

## **Exacto™ cold snare**

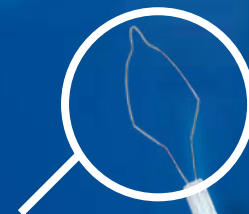
More control for placement around diminutive polyps, and a cleaner cut than traditional braided wire snares.

*cold snare designed specifically for removal of diminutive polyps*

*9mm size provides more control for placement and resection*

*wire diameter is 33% thinner than traditional braided wires - allows for a clean cut and may help reduce polyp "fly away"*

*allows for full circumferential resection of the polyp*



Exacto™ cold snare actual size



Placement of the Exacto™ snare around polyp



Cold snaring with the Exacto™ snare



Clean cut at resection site with Exacto™ snare

## **iSnare® system**

A unique, multi-functional system ideal for endoscopic mucosal resection (EMR) and the removal of polyps.

*inject or snare at any time throughout the procedure without device exchanges while maintaining scope position*

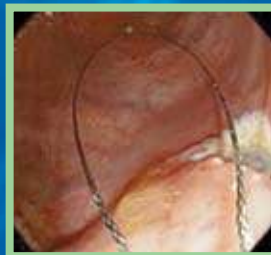
*facilitates immediate injections in response to bleb absorption/dissipation or bleeding*



Submucosal bleb created with iSnare® system



Submucosal lift prior to snare positioning



Tissue resection with iSnare® system

## Traxtion™ snare

Arguably one of the stiffest snares on the market today and ideal for resection of flat polyps.

*a uniquely designed braided wire makes it stiffer than other snares*

*memory points provide better grip of the mucosa*

*ability to retain its shape and integrity even after multiple resections*



## Rotator™ snare

Easy rotation with one-handed operation helps address a variety of anatomical findings.

snare rotation

## Short Throw™ snare

The Short Throw™ snare offers superior loop memory and one-handed deployment.

# Polyp retrieval

## Roth Net® retrievers

Partnering with Bennett Roth, M.D., US Endoscopy developed a device that revolutionized tissue retrieval. The Roth Net® retrievers come in many sizes and are designed to...

*quickly and easily retrieve multiple, large or piecemeal polyps*

*preserve specimens for histology*

*transparent net material allows for continued examination with clear visibility*



Roth Net® retrieval of large polyp



Roth Net® retrieval of multiple polyps/polyp fragments



EMR specimen removal with Roth Net® retriever

## eTrap<sup>®</sup> polyp trap

Allows for quick and accurate retrieval of multiple specimens, while safeguarding clinicians from unnecessary exposure to biomaterials.

*collect multiple polyps with uninterrupted suction*

*magnifying window allows easy visualization of the collected specimen*

*simple transport and preservation of specimens*

*easy-grip design and a measurement guide inside each tray for accurate polyp identification*



includes 2 trays



## InStream<sup>™</sup> polyp trap

A more efficient alternative to other polyp or mucous traps that minimizes exposure to biomaterial.

*specimen screen to easily isolate and remove the polyp*

*luer lock connector to flush the polyp from the screen with a syringe*

*removable screen for flow-through capability*



specimen screen

# product information

product number	description	needle gauge	sheath diameter (mm)	length (cm)	approximate snare size (cm)	units/box
<b>polypectomy</b>						
00711018	Short Throw™ snare - mini	-	2.4	230	1.25 x 3.0	10
00711019	Short Throw™ snare - standard oval	-	2.4	230	2.5 x 5.4	10
00711085	iSnare® system - oval	23 gauge x 5mm	3.0	230	2.5 x 4.0	5
00711086	iSnare® system - oval	25 gauge x 5mm	3.0	230	2.5 x 4.0	5
00711088	iSnare® system - hexagonal	25 gauge x 5mm	3.0	230	2.5 x 4.0	5
00711089	iSnare® system - hexagonal	23 gauge x 5mm	3.0	230	2.5 x 4.0	5
00711101	Short Throw™ snare - standard oval	-	2.4	350	2.5 x 5.4	5
00711113	Traxtion™ snare	-	2.4	230	2.5 x 4.0	10
00711115	Exacto™ snare	-	2.4	230	9.0mm	10
00711120	Rotator™ snare - standard	-	2.4	230	2.5 x 5.4	10
00711121	Rotator™ snare - mini	-	2.4	230	1.25 x 3.0	10
<b>polypectomy retrieval</b>						
00711050	Roth Net® retriever	-	2.5	230	3 x 6	5
00711052	Roth Net® retriever	-	2.5	230	3 x 6	10
00711057	Roth Net® retriever - mini	-	1.8	160	2 x 4.5	5
00711059	Roth Net® retriever - maxi	-	3.0	160	4 x 8	5
00711098	InStream™ polyp trap	-	-	-	-	50
00711099	eTrap® polyp trap	-	-	-	-	25
00711150	Roth Net® retriever - polyp	-	2.5	230	3 x 6	5
00711151	Roth Net® retriever - polyp	-	2.5	230	3 x 6	10
00711162*	Roth Net® retriever	-	2.5	230	3 x 6	10
00715050/ 00715060*	Roth Net® Platinum® retriever - universal	-	2.5	230	4 x 5.5	5
00715150/ 00715160*	Roth Net® Platinum® retriever - polyp	-	3.0	230	4 x 5.5	5

\*sterile

Listening...and delivering solutions®, the US Endoscopy listening...and delivering solutions design, and all marks denoted with ® or ™ are registered with the U.S. Patent and Trademark Office, or trademarks owned by US Endoscopy



*listening... and delivering solutions®*

5976 Heisley Road  
Mentor, OH 44060  
phone (1) 440 / 639-4494  
fax (1) 440 / 639-4495  
customer service (1) 800 / 769-8226  
email [global@usendoscopy.com](mailto:global@usendoscopy.com)

[www.usendoscopy.com](http://www.usendoscopy.com)