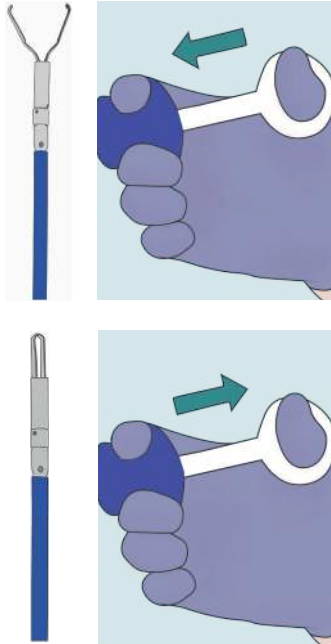


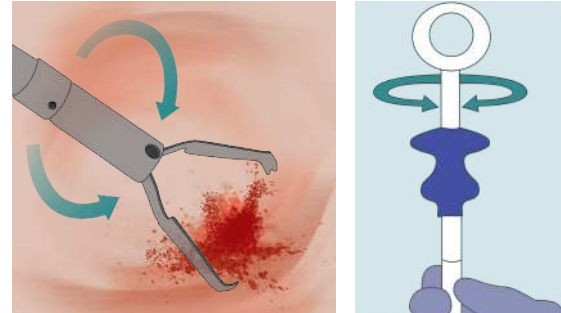
# Viper HaemoClip

## Step 1

Remove device from protective sheath and test by gently moving the blue handle spool away from the thumb ring and gently back again. Advance the device in a smooth motion into scope accessory channel via biopsy valve.

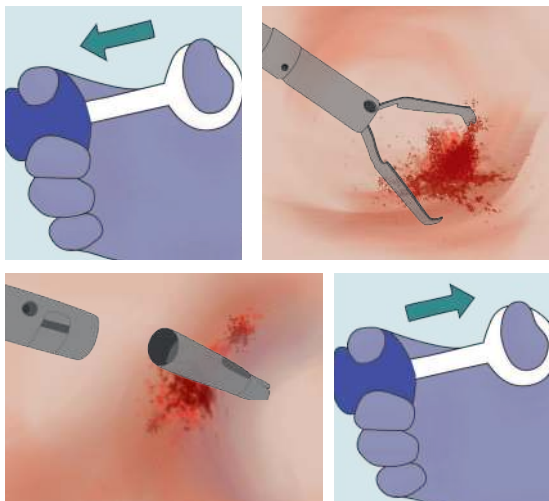


## Step 2



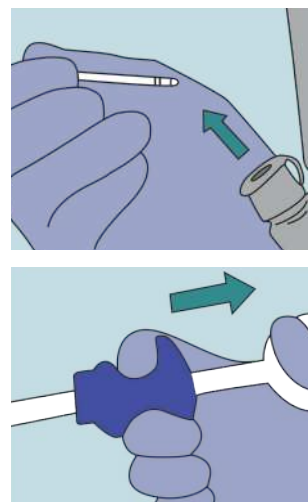
Under endoscopic view, open the clip over the targeted site by gently moving the blue handle spool away from the thumb ring. If the clip needs to be repositioned, gently close and reopen the clip as many times as required. The clip can be rotated in either direction in the 'open' position by holding the blue catheter sheath firmly and turning the white part of the handle.

## Step 3



When in correct position, gently close the clip by pulling the handle spool towards the thumb ring. Once the tissue is approximated, continue to pull the blue handle spool sharply towards the thumb ring and the clip will deploy. No additional device or scope movement should be necessary to fully detach the clip.

## Step 4



After deployment, carefully remove the device from the scope accessory channel and dispose in the usual way.