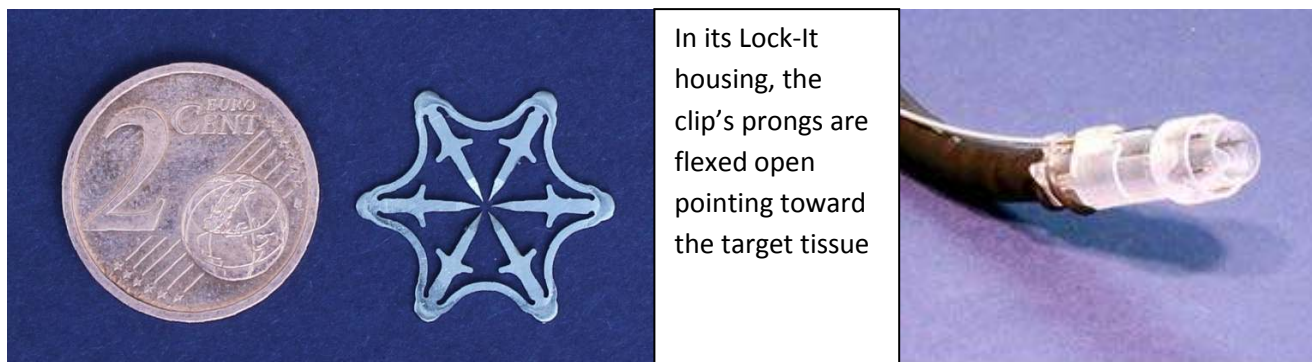


The Padlock Clip™ and Lock-It™ Delivery System



Introducing Radial Compression Technology for the Healing Benefits of Circumferential GI Approximation

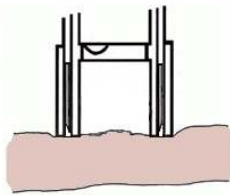
- **The Padlock Clip™** is made of a flexible, biocompatible alloy with exceptional shape-retention memory
- It instantly springs back to its original form when deployed
- Its circumferential approximation encircles the defect, and gathers, folds and compresses the tissue
- Proprietary radial compression technology provides even 360° tissue compression
- Precise tissue controllers limit penetration and moderate tissue-on-tissue pressure
- Strategic capillary enabling gaps promote healthy blood flow
- **The Result** - effective tissue closure that is resistant to GI pressures while still maintaining blood flow to promote “excellent healing”¹
- **The Lock-It™ Delivery System** provides fast and easy instrument mounting
 - less than a minute
- Does not occupy an instrument channel
- Large tissue chamber (1cm x 1cm) for substantial tissue gathering prior to closure
- Intuitive, precise thumb press deployment



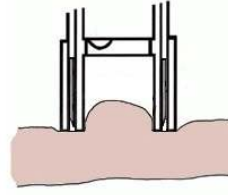
¹ David J. Desilets, John R. Romanelli, David B. Earle, Christopher N. Chapman. “Gastrotomy Closure with the Lock-It System and the Padlock-G clip: A Survival Study in a Porcine Model” Journal of Laparoendoscopic & Advanced Surgical Techniques doi:10.1089/lap.2010.0076.

How it works - a cross-sectional view of the Padlock Clip™ being deployed

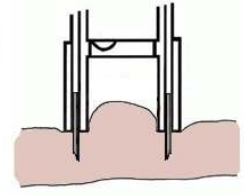
1) The tissue chamber is positioned over the defect and against the GI wall



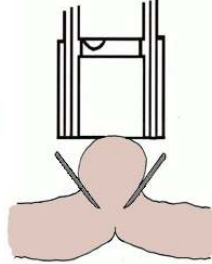
2) Additional tissue can be drawn into the chamber using suction or other established techniques



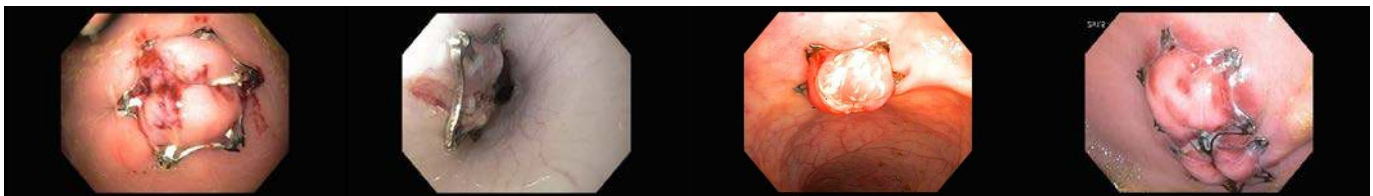
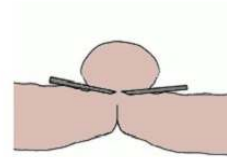
3) When the control handle is pressed, the Padlock Clip instantly encircles the target tissue holding it in place



4) The clip immediately clears its housing, and its prongs lift and pull toward each other, radially compressing the secured tissue with uniform pressure from all six sides



5) The result is an effective tissue closure, resistant to GI pressure, while still maintaining blood flow to promote excellent healing with epithelial growth



Gastric

Esophagus

Colonic

Daisy Chain

Effectively close defects and maintain blood flow for excellent healing

The Padlock Clip™ and Lock-It™ Delivery System

- For endoscopes with a diameter of Ø9.5 - 11mm
(additional size range pending – check www.padlockclip.com for availability)

The Padlock Clip is indicated for:

- Hemostasis for: Mucosal/Sub mucosal defects, Bleeding Ulcers, Arteries <2mm, Polyps <1.5cm diameter and Diverticula in the Colon
- Closure of GI tract luminal perforations < 20mm that can be treated conservatively
- Endoscopic Marking of lesions

For more information:

Web: www.padlockclip.com

Aponos  **Medical**

Customer Service: Kingston, NH USA

Hours: 10 am – 6pm EST/EDT

Telephone: 603-347-8229 Fax: 978-945-6197

Email: customerservice@aponosmedical.com