

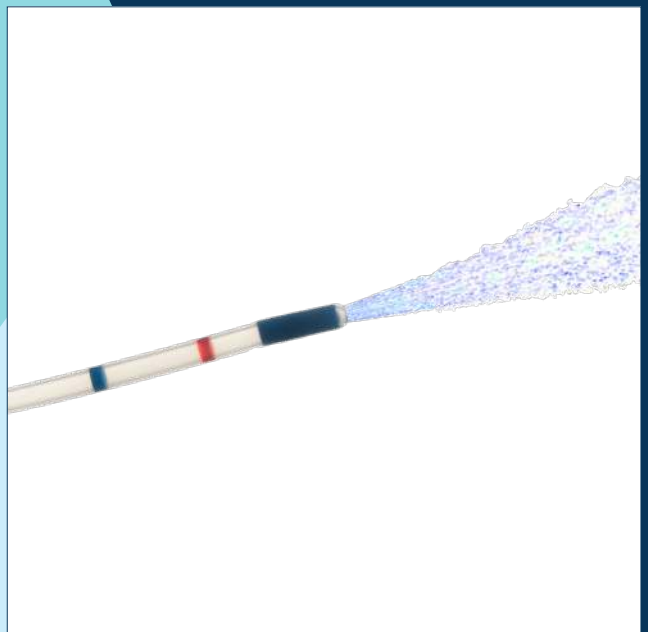
# Diagnostic Devices

Introducing a wide range of disposable  
accessories for diagnostic endoscopy



**DIAGMED**  
HEALTHCARE

MAKING A DIFFERENCE TO HEALTH

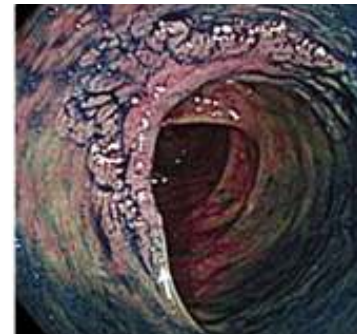


## Indigo Carmine

Indigo Carmine highlights mucosal anomalies and marks the tumour margins when the limits are clearly not visible.

### Indications for use:

- Indigo Carmine 1% is used (in a dilute state) for chromoendoscopy procedures with the aid of a spray catheter. The dye is sprayed against the colon mucosa wall to identify any tissue which is indicating symptoms of IBD, Colorectal Cancer, Ulcerative Colitis amongst other diseases. Indigo Carmine is classified as a non-sterile solution and suitable for single use only
- Indigo Carmine is suitable for EMR procedures. The solution is sprayed onto the resection site post tissue removal which assists in identifying any additional tissue which could be removed
  - » Polypectomy
  - » Endoscopic Mucosal Resection (EMR)
  - » Endoscopic Sub-Mucosal Dissection (ESD)



COLONIC MUCOSA STAINED WITH INDIGO CARMINE



“Diagmed Healthcare Ltd are the only medical distributors in the UK licensed to distribute Indigo Carmine within the NHS and Private Healthcare Systems”

### Dilution Rates:

- BSG recommended concentration of 0.2% for chromoendoscopy techniques
- Dilution rate of 10mls of Indigo Carmine 1% with 40mls of water or saline solution. Only suitable for genuine Indigo Carmine, and not imitations

### Ordering Information

Product Code	Description	Size	Box Size
INDIGO-D	Indigo Carmine non-sterile Solution	10ml single use syringe solution at 1%	10

**HPFAST™**  
 Agar gel formula of this test provides accurate H.pylori diagnosis in **24 Hours** or less

**HPONE™**  
 This test provides accurate, cost-effective, H.pylori results in **One Hour** or less.



## Urease Tests

Get the results you need the first time with an all-in-one kit that provides a quick and accurate urease test for Helicobacter Pylori diagnosis.

### Features:

- HpFast™ and HPOne™ use an easy-to-read, high-contrast blue colour. A positive control is also included with each test kit
- HpFast™ and HpOne™ are supplied with a pick-up spatula to avoid the unnecessary risk of using needles
- HpFast™ and HpOne™ provide results in 24 hours and one hour, respectively

### How do I administer a H.pylori test with HpFast™ or HpOne™?

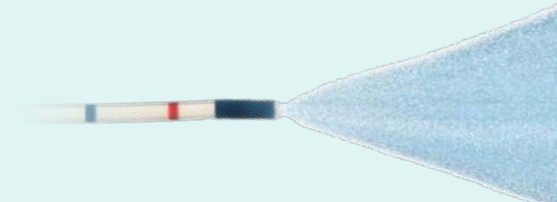
Both HpFast™ and HpOne™ utilise a breakaway biopsy pick and spatula for safer cell removal than other available tests, which often require clinical staff to use a syringe to remove cells, risking injury and contamination.

### Ordering Information

Product Code	Description	Box Size
HPONE	1-Hour Urease Test	50
HPFAST	24-Hour Urease Test	50

HpFast™ comes with positive control (Urease) and breakaway biopsy pick  
 HpOne™ comes with positive control (Urease), breakaway biopsy pick and Reagent

DISPOSABLE  
SPRAY CATHETER  
IN MOTION



## Disposable Spray Catheter

### Features:

- Spray Catheter for the spraying of the mucous membranes during endoscopic examination
- Ideal for the use of diluted Indigo Carmine during IBD surveillance
- Ideal for the use of Iodine during Barretts surveillance

### Ordering Information

Product Code	Description	Sheath Diameter (mm)	Sheath Length (mm)	Box Size
99-01-01-31-0	Disposable Spray Catheter	2.3	210	5



## Lugol Sterile Solution

Lugol 2% is a non-toxic stain used in Upper GI chromoendoscopy, primarily for diagnosing Barrett's oesophagus.



Lugol is a combination of iodine and potassium iodide that forms a compound iodine solution for staining tissue. With the use of a spray catheter Lugol stains the tissue a green-brown colour. Any area which remains unstained is lacking glycogen in the epithelium which could indicate dysplasia.

Lugol is quickly absorbed by the tissue and stains the area for a maximum time of 60 minutes. It has been classified as a sterile solution which is suitable for single use only.

### Indications:

- Colposcopy Screening
- Identifying Barrett's Oesophagus
- Chromoendoscopy Procedures

### Dilution Rates:

- Lugol is issued in 10ml ampoules in a ready to use diluted solution of 2% concentration

### Ordering Information

Product Code	Description	Size	Box Size
LUGOL	Lugol Staining Agent	10ml Single Use Syringe Solution at 2%	10



Lumley Close, Thirsk Industrial Park, Thirsk, North Yorkshire, England, YO7 3TD  
01845 526660 | [info@diagmed.co.uk](mailto:info@diagmed.co.uk) | [diagmed.healthcare](http://diagmed.healthcare)

