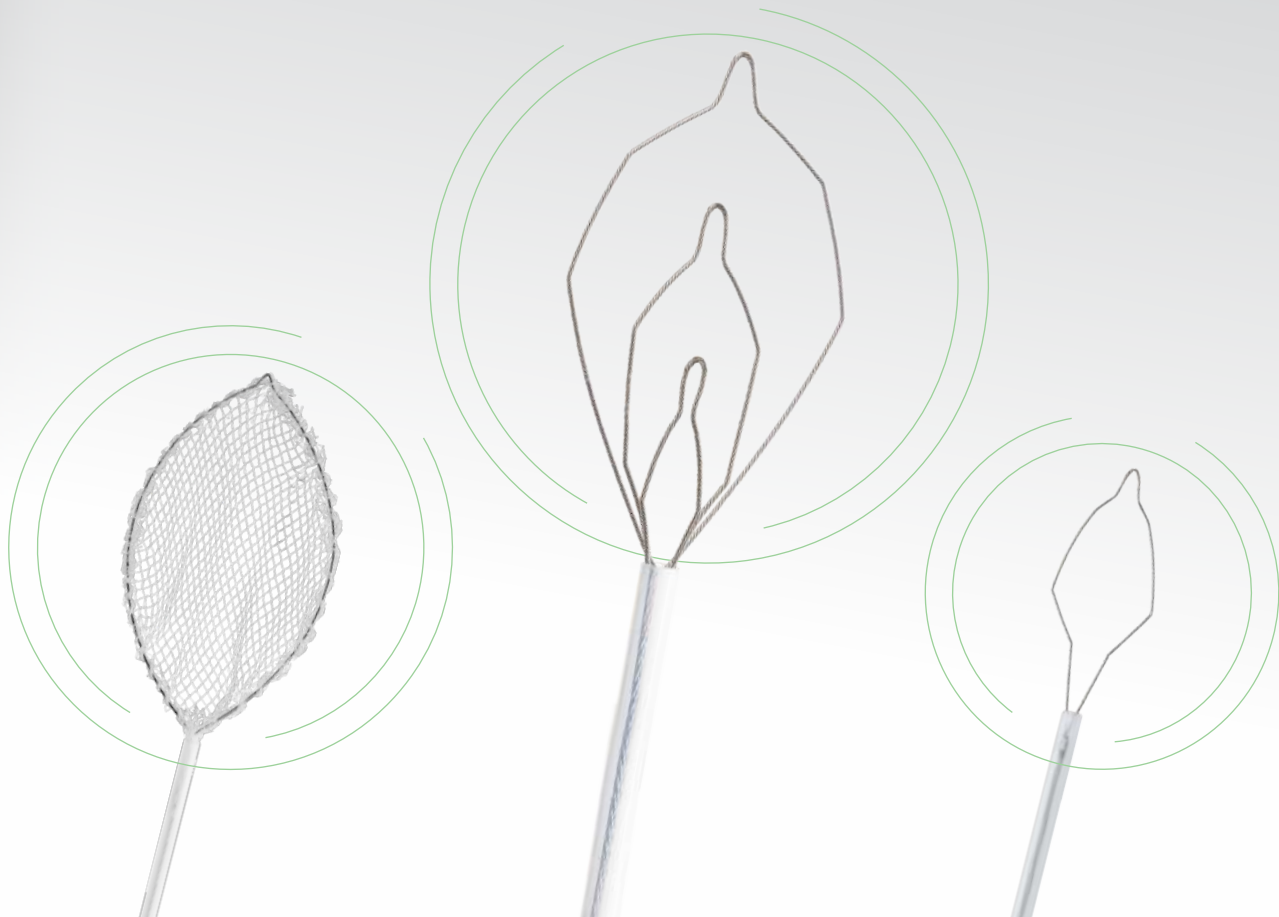


# Polypectomy Solutions



 **STERIS**

Endoscopy

# Polypectomy

STERIS Endoscopy offers an extensive line of polypectomy devices. From a dynamic hot and cold snare with a coined distal tip to our clinically proven cold snare, we offer a product solution to accommodate a variety of needs.

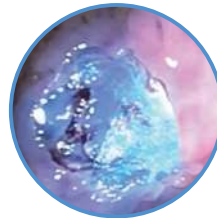
## CoinTip™ snare

The CoinTip snare features a dynamic braided wire configuration with a coined distal tip supporting hot and cold cutting capabilities specifically for complex polypectomies like endoscopic mucosal resection.

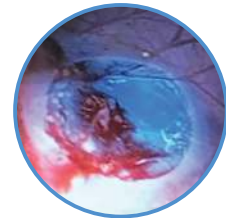


- » *distal tip flattened to 0.010" which is achieved by the manufacturing process of "coining"*
- » *0.016" snare loop wire supports grip of tissue to capture target*

- » *catheter includes an internal strain relief for added support during resection to reduce buckling during tissue resection*



Resection site after hot EMR with minimal cautery effect

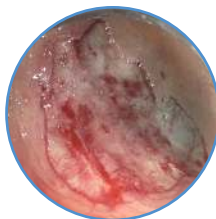
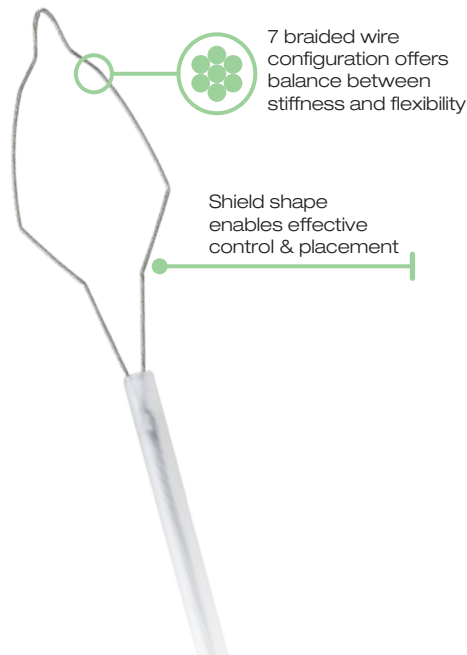


Resection site after cold EMR en bloc resection

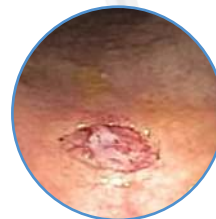
## Exacto® cold snare

Clinically proven to achieve a significantly higher rate of complete resection, the design of the Exacto cold snare offers control and placement for a precise, clean cut when compared to traditional braided snares.<sup>1,2</sup>

- » *enables a clean cut with a thin wire design (0.012"/0.30mm) while maintaining its shape and stiffness*
- » *features a shield shape design that maximizes its width for control and placement*
- » *9mm mini snare size that facilitates polyp tissue resection without the use of cautery*
- » *offers a thin, stiff catheter that decreases buckling while aiding in placement*



40mm laterally spreading tumor resected with the Exacto cold snare



Clean, en bloc resection site of a subcentimeter polyp



## Lariat® snare

The multi-functional design of the Lariat snare helps address a variety of resection needs including piecemeal resection and multiple polyps.

- » *three distinct shapes with multiple sizes to reduce the need to exchange snares*
- » *snare loop design maintains its shape and integrity after multiple resections*



## iSnare® system

The iSnare system is a family of multi-functional devices ideal for reducing procedure time by minimizing device exchanges and aiding in clinical outcomes during submucosal injection polypectomy procedures.

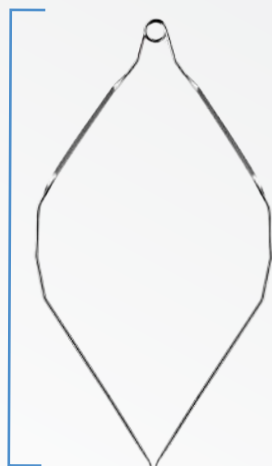
- » *features alternating injection needle and snare operated by a multi-functional handle*
- » *enables immediate snaring to avoid cushion / bleb absorption*
- » *available in three snare options including the multi-stage Lariat snare*



## Histolock<sup>®</sup> resection device

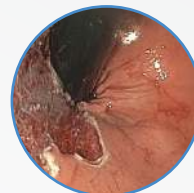
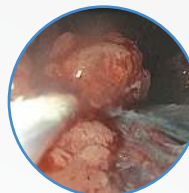
The Histolock resection device features a stiff monofilament wire to help recruit and resect flat tissue during complex polypectomy procedures.

*14mm snare size that offers maneuverability for controlled placement and precise resection*



*twisted wire that lays flat on the mucosa during resection*

**Histolock**  
resection device

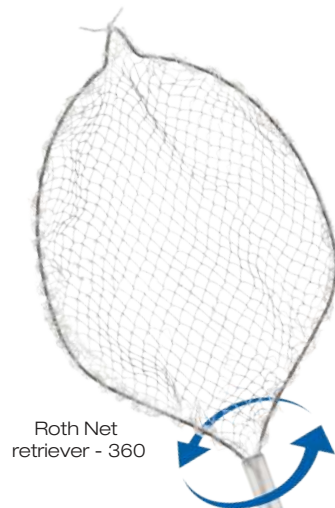


The Histolock device effectively resects a flat 4cm rectal polyp with precision.

## Roth Net® retrievers

From capturing large polyps to securing multiple polyp fragments, the Roth Net retriever is a device you can count on for consistent performance. Our all-encompassing line of retrieval nets...

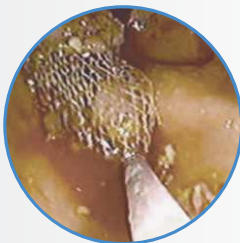
- » *preserve polyp fragments and specimens for histopathology*
- » *allow for durability and continued visibility through the net*
- » *opens even in retroflexed position*



Roth Net retriever - 360



Retrieval of large polyp with Roth Net retriever



Retrieval of multiple polyps/polyp fragments with Roth Net retriever



Roth Net retriever - select offering durability and strength across multiple passes



Roth Net retriever - select



## eTrap® polyp trap

Allows for quick and accurate retrieval of multiple specimens, while safeguarding clinicians from unnecessary exposure to biomaterials.



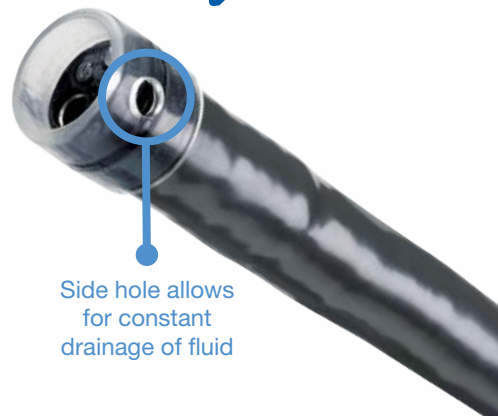
- » *collect multiple polyps with uninterrupted suction*
- » *simple transport and preservation of specimens*
- » *magnifying window allows direct visualization of the collected specimen*

## Reveal® distal attachment cap

The Reveal distal attachment cap is designed to facilitate the endoscope's view during polypectomy procedures.



- » *helps avoid 'red out' by maintaining a constant distance between the endoscope and mucosa*
- » *can be used with other polypectomy devices, including snares and needles*



Side hole allows for constant drainage of fluid

# Product Information

| Polypectomy Devices    |  |                         |                      |               |   |           |
|------------------------|--|-------------------------|----------------------|---------------|---|-----------|
| product number         | description  | needle gauge/projection | sheath diameter (mm) | length (cm)   | snare size (mm)                                     | units/box |
| BX00711018             | Short Throw snare - mini   | -                       | 2.4                  | 230           | 12.5 x 30   | 10        |
| BX00711019             | Short Throw snare - standard oval  | -                       | 2.4                  | 230           | 25 x 54   | 10        |
| BX00711084             | iSnare system - Lariat snare   | 25 gauge x 5mm          | 2.5                  | 230           | oval: 30 x 55<br>hex: 10 x 28<br>diamond: 6 x 15    | 5         |
| BX00711085             | iSnare system - oval   | 23 gauge x 5mm          | 3.0                  | 230           | 25 x 40   | 5         |
| BX00711086             | iSnare system - oval   | 25 gauge x 5mm          | 3.0                  | 230           | 25 x 40   | 5         |
| BX00711088             | iSnare system - hexagonal  | 25 gauge x 5mm          | 3.0                  | 230           | 25 x 40   | 5         |
| BX00711089             | iSnare system - hexagonal  | 23 gauge x 5mm          | 3.0                  | 230           | 25 x 40   | 5         |
| BX00711101             | Short Throw snare - standard oval  | -                       | 2.4                  | 350           | 25 x 54   | 5         |
| BX00711113             | Traxtion hexagonal snare   | -                       | 2.4                  | 230           | 25 x 40   | 10        |
| BX00711115             | Exacto cold snare  | -                       | 2.4                  | 230           | 9 x 19  | 10        |
| BX00711094             | Exacto cold snare  | -                       | 2.4                  | 230           | 9 x 19  | 20        |
| BX00711095             | Exacto cold snare  | -                       | 2.4                  | 230           | 9 x 19  | 50        |
| BX00711110             | CoinTip snare  | -                       | 2.5                  | 230           | deltoid: 20 x 32<br>hex: 10 x 27<br>diamond: 6 x 19 | 10        |
| BX00711117             | Histolock resection device   | -                       | 2.4                  | 230           | 14 x 27   | 10        |
| BX00711871*            | Histolock resection device   | -                       | 2.4                  | 230           | 14 x 27   | 3         |
| BX00711119             | Lariat snare   | -                       | 2.4                  | 230           | oval: 30 x 55<br>hex: 10 x 28<br>diamond: 6 x 15    | 10        |
| BX00711096             | Lariat snare   | -                       | 2.4                  | 230           |   | 20        |
| BX00711097             | Lariat snare   | -                       | 2.4                  | 230           |   | 50        |
| BX00711120             | Rotator snare - standard   | -                       | 2.4                  | 230           | 25 x 54   | 10        |
| BX00711121             | Rotator snare - mini   | -                       | 2.4                  | 230           | 12.5 x 30   | 10        |
| product number         | description  | specimen strainer trays |                      |               |   | units/box |
| BX00711099             | eTrap polyp trap   <a href="http://www.steris.com/healthcare">Visit steris.com/healthcare</a> to view our full line of polyp traps | 50 (2 per unit)         |                      |               |   | 25        |
| product number         | description  | endoscope tip O.D.      | cap O.D.             | length        | packaging color                                     | units/box |
| BX00711770             | Reveal distal attachment cap (sterile)   | 8.9-9.5mm               | 11.35mm              | 4mm           | pink  | 10        |
| BX00711771             | Reveal distal attachment cap (sterile)   | 9.5-9.9mm               | 11.8mm               | 4mm           | blue  | 10        |
| BX00711772             | Reveal distal attachment cap (sterile)   | 9.8-10.5mm              | 12.4mm               | 4mm           | orange  | 10        |
| BX00711773             | Reveal distal attachment cap (sterile)   | 10.9-11.8mm             | 13.4mm               | 4mm           | light green   | 10        |
| BX00711774             | Reveal distal attachment cap (sterile)   | 12.6-13.2mm             | 15.0mm               | 4mm           | yellow  | 10        |
| BX00711775             | Reveal distal attachment cap (sterile)   | 13.4-13.9mm             | 15.7mm               | 4mm           | dark green  | 10        |
| Roth Net® retrievers   |  |                         |                      |               |   |           |
| product number         | description  | sheath diameter (mm)    | length (cm)          | net size (cm) | qty/box   |           |
| Tissue retrieval       |  |                         |                      |               |   |           |
| BX00711050             | Roth Net retriever - standard  | 2.5                     | 230                  | 30 x 60       | 5   |           |
| BX00711151             | Roth Net retriever - polyp   | 2.5                     | 230                  | 30 x 60       | 10  |           |
| BX00711162             | Roth Net retriever - standard (sterile)  | 2.5                     | 230                  | 30 x 60       | 10  |           |
| BX00715050             | Roth Net Platinum retriever - polyp  | 2.5                     | 230                  | 40 x 55       | 5   |           |
| BX00715060             | Roth Net Platinum retriever - polyp (sterile)  | 2.5                     | 230                  | 40 x 55       | 5   |           |
| Foreign body retrieval |  |                         |                      |               |   |           |
| BX00711150             | Roth Net retriever - standard  | 2.5                     | 230                  | 30 x 60       | 5   |           |
| BX00711052             | Roth Net retriever - standard  | 2.5                     | 230                  | 30 x 60       | 10  |           |
| BX00711053             | Roth Net retriever - standard  | 2.5                     | 160                  | 30 x 60       | 5   |           |
| BX00711169             | Roth Net retriever - select (sterile)  | 2.5                     | 230                  | 30 x 60       | 10  |           |
| BX00711198             | Roth Net retriever - 360 (sterile)   | 2.5                     | 230                  | 30 x 60       | 10  |           |
| BX00711155             | Roth Net Platinum retriever - food bolus   | 2.5                     | 160                  | 40 x 55       | 5   |           |
| BX00711165             | Roth Net retriever - maxi (sterile)  | 3.0                     | 230                  | 30 x 60       | 5   |           |
| BX00715060             | Roth Net Platinum retriever - universal (sterile)  | 2.5                     | 230                  | 40 x 55       | 5   |           |
| Specialty retrieval    |  |                         |                      |               |   |           |
| BX00711152             | Roth Net retriever - enteroscope   | 2.5                     | 350                  | 30 x 60       | 5   |           |
| BX00711158             | Roth Net retriever - mini polyp  | 2.8                     | 230                  | 25 x 45       | 10  |           |
| BX00711159             | Roth Net retriever - mini polyp (sterile)  | 2.8                     | 230                  | 25 x 45       | 5   |           |
| BX00711168             | Roth Net retriever - mini (sterile)  | 1.8                     | 160                  | 20 x 45       | 5   |           |

\*Not for sale in the U.S.

[www.steris.com](http://www.steris.com)

©2020 STERIS Endoscopy. All Rights Reserved.  
Unless otherwise indicated, all marks denoted with ® or ™ are registered with the U.S. Patent and Trademark Office, or are trademarks owned by STERIS or its affiliates.

761130 Rev. E



Endoscopy