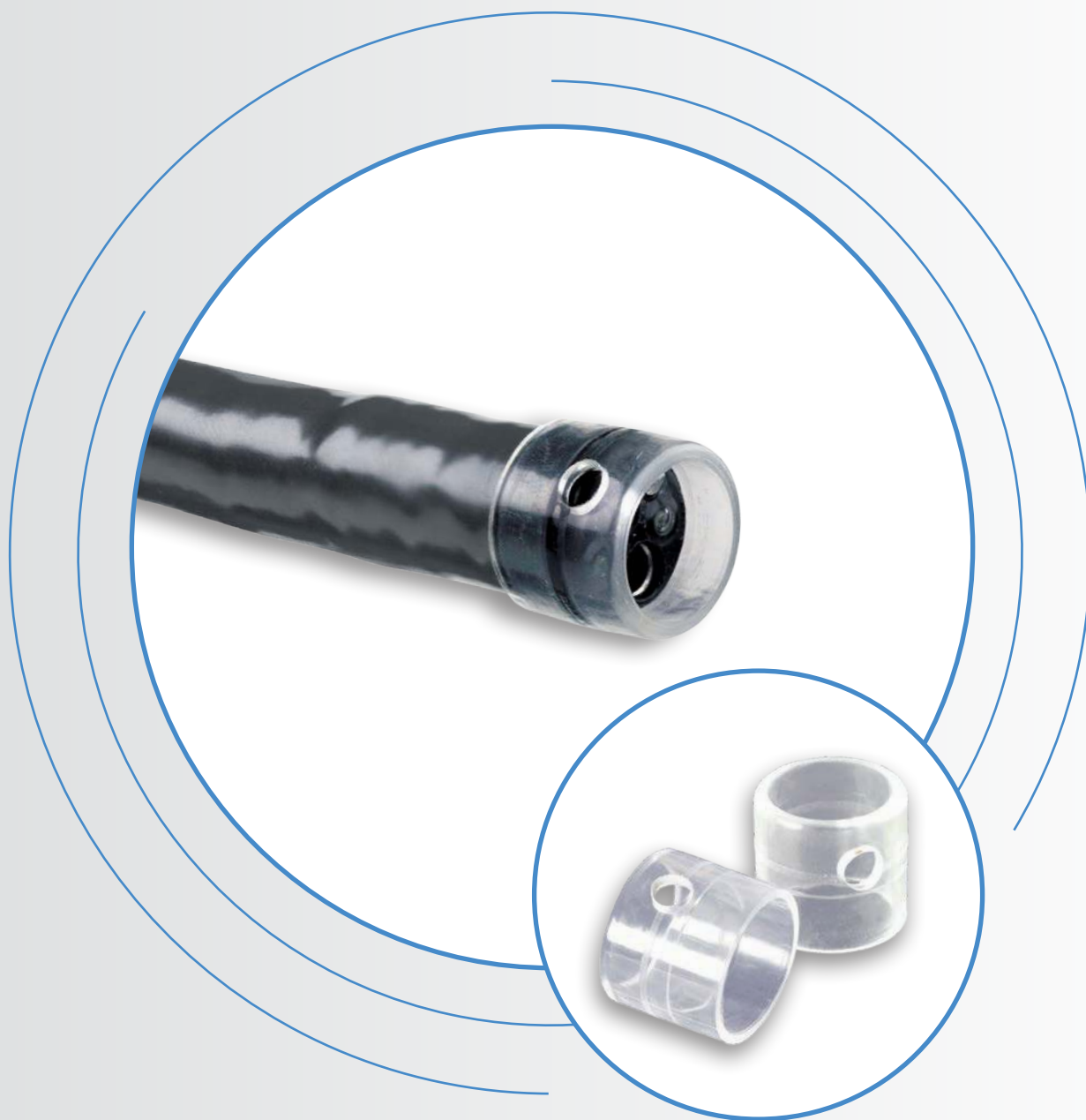


Reveal[®]

distal attachment cap





Maintain a clear view during endoscopic procedures...

The **Reveal distal attachment cap** is designed to facilitate the endoscope's view during a variety of therapeutic and endoscopic procedures.

The Reveal distal attachment cap...

- Helps avoid 'red out' by maintaining a constant distance between the endoscope and mucosa
- Aids in flattening folds and maneuvering through difficult turns in the GI tract
- Can be used in conjunction with accessories such as snares or needles



For more information on the Reveal distal attachment cap, contact STERIS Endoscopy today.

Product Number	Packaging Color*	Cap Outer Diameter (mm)	Endoscope Tip Outer Diameter (mm)**	Length (mm)	Sterile	Units/Box
BX00711770		11.35	8.9 - 9.5	4	yes	10
BX00711771		11.8	9.5 - 9.9	4	yes	10
BX00711772		12.4	9.8 - 10.5	4	yes	10
BX00711773		13.4	10.9 - 11.8	4	yes	10
BX00711774		15.0	12.6 - 13.2	4	yes	10
BX00711775		15.7	13.4 - 13.9	4	yes	10

* Packaging is color coded by cap size

** Some endoscope tips may have variable outer diameter tolerances

Distributed by:



Endoscopy

STERIS
 5960 Heisley Road
 Mentor, OH 44060-1834 – USA
 Customer Service: +1 800-548-4873
 Fax: 440-639-4495
www.steris.com

©2021 STERIS Endoscopy or its affiliates. All rights reserved.
 Unless otherwise indicated, all marks denoted with © or ™ are registered with the U.S.
 Patent and Trademark Office, or are trademarks owned by STERIS or its affiliates.

Follow us:

760989 Rev. C