

# Polyp Trap Retrieval Solutions



# Polyp Trap Retrieval Solutions

STERIS Endoscopy is proud to offer a complete portfolio of ***polyp trap retrieval solutions*** that address a variety of Customer preferences and clinical needs.

From the innovative ***eTrap® polyp trap*** designed with nurses in mind, to the economical ***Baleen™ polyp trap***, our portfolio includes a variety of designs to accommodate you and your staff.

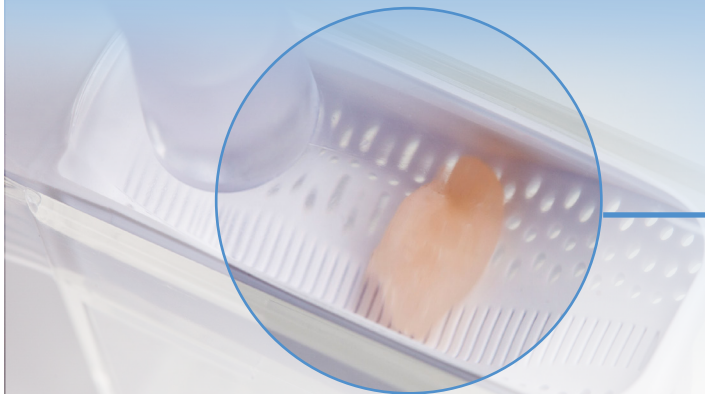
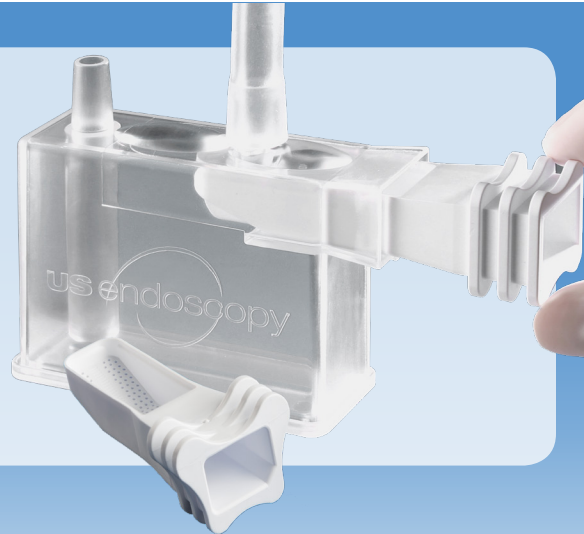
## eTrap polyp trap



Inspired by nurses, the **eTrap polyp trap** is our most popular solution allowing for accurate retrieval of multiple specimens, while safeguarding clinicians from unnecessary exposure to biomaterial.

### The eTrap polyp trap...

- *includes 2 removable strainer trays*
- *allows for collection of multiple polyps with uninterrupted suction*
- *features a clear magnifying window for visualization of collected polyps*
- *offers simple transport and preservation of specimens*



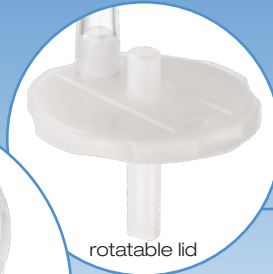
specimen captured in  
eTrap polyp trap

## Suction Polyp Trap™ four chamber trap

The **Suction Polyp Trap four chamber trap** helps reduce procedure time by eliminating the need for hand-screening and filtering, allowing for effective retrieval of polyps.

### The Suction Polyp Trap four chamber trap...

- *features four capture chambers allowing for accurate identification and localization of multiple specimens*
- *offers a rotatable lid for efficient polyp retrieval*
- *designed to filter specimens, helping to minimize exposure to bodily fluids*



## Quick Catch™ in-line suction polyp trap

The **Quick Catch in-line suction polyp trap** allows for in-line installation and features clear plastic construction allowing for visual verification of polyp specimens.

### The Quick Catch in-line suction polyp trap...

- offers a chamber with flat surfaces allowing for gripping and handling
- features a luer connector to flush polyps from the screen with a syringe

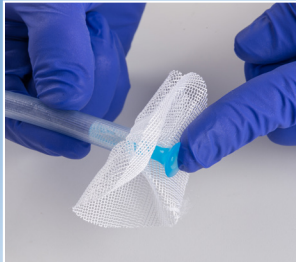
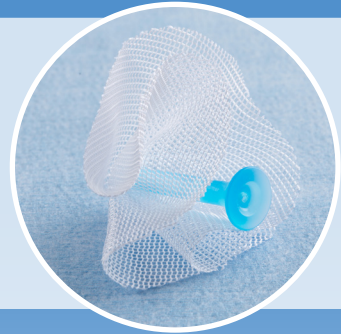


## Baleen polyp trap

The **Baleen polyp trap** reduces exposure to biomaterial and is an economical alternative to other polyp trap solutions.

### The Baleen polyp trap...

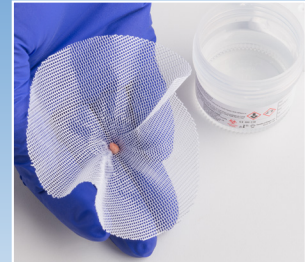
- *directly attaches to suction tubing to act as an in-line filter collecting the specimen*
- *offers a sturdy, durable netting material that helps to resist tearing*



Baleen polyp trap inserted into suction tubing.



Baleen polyp trap in place and ready for use.



Specimen collected in netting of Baleen polyp trap.

## product information

product number	description	units/box
BX00711099	eTrap polyp trap	25
710202	Suction Polyp Trap four chamber trap	12
710201	Quick Catch in-line suction polyp trap	50
NBPT520	Baleen polyp trap	100

For more information on our complete offering of polyp trap solutions, visit [www.steris.com](http://www.steris.com) today.



Endoscopy



a STERIS company

Lumley Close, Thirsk  
Industrial Park, Thirsk,  
North Yorkshire, England,  
YO7 3TD 01845 526660 |  
info@diagmed.co.uk |  
diagmed.healthcare

© 2019 STERIS Endoscopy or its affiliates. All rights reserved.  
Unless otherwise indicated, all marks denoted with ® or ™ are registered with the U.S. Patent  
and Trademark Office, or are trademarks owned by STERIS or its affiliates.

Follow us:    

761490 Rev. D