

מה חדש?

o que há de novo

새로운 것은 무엇인가요

mikä on uutta

nyheder

qué hay de nuevo

was gibts neues

ما هو الجديد؟

yeni ne var

新しいのは何

cosa c'è di nuovo

quoi de neuf

hvad er nyt

wat is nieuw

what's new

new & featured products | **2021**

 **STERIS**

Endoscopy

unique product solutions

At ***STERIS Endoscopy*** our mission is to provide our Customers with innovative products to better diagnose, prevent, and treat disease of the gastrointestinal tract.

Through collaboration and research & development, our portfolio delivers ***advanced technologies in therapeutic endoscopy improving patient care everyday.***

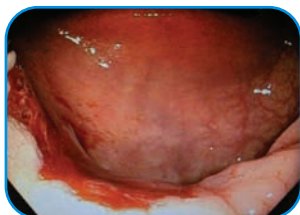
From advanced polypectomy and GI emergency devices, to procedural infection prevention solutions we are continuously developing ***new innovations and technologies.***

Check out our latest offerings...

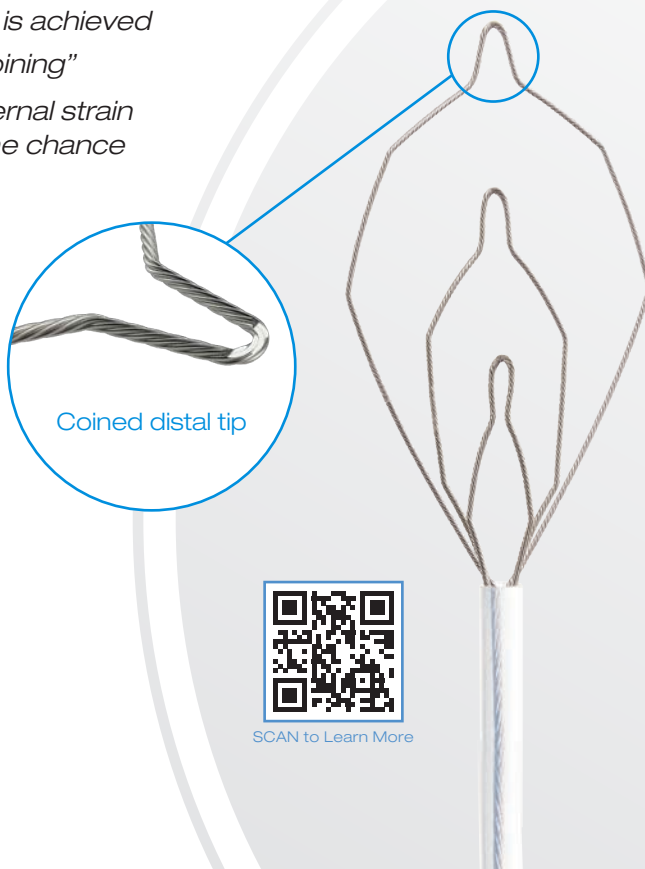
CoinTip™ snare

Not all snares offer the same recruitment, resection, and performance. The innovative **CoinTip snare** supports hot and cold resection with very unique design features and leverages the benefits of different snare sizes to support precise cutting capabilities.

- *Distal tip flattened to 0.25mm which is achieved by the manufacturing process of “coining”*
- *Double catheter that includes an internal strain relief for added support to reduce the chance of buckling during resection*



Clean resection site with the CoinTip snare



SCAN to Learn More

BX00711110	
Sheath diameter	2.5mm
Length	230cm
Snare width	Deltoid shape 20mm Hex shape 10mm Diamond shape 6mm

multi-modality sampling

Histoguide® wire-guided forceps

The **Histoguide wire-guided forceps** and the clinically proven **Infinity® ERCP sampling device** are ideal companions. Pairing the two devices for a two-tiered, multi-modality sampling approach may help improve diagnostic capabilities and lead to increased sensitivity during ERCP procedures to aid in more accurate diagnosis.¹

- *Offers placement of forceps into the biliary ductal system along a guidewire to facilitate stricture diagnosis*



Histoguide

BX00711660			
Catheter diameter	2.1mm	Jaw opening width	8.0mm
Jaw diameter	2.2mm	Length	230cm

Compatible with a .035" guidewire

Infinity® ERCP sampling device



- *Purpose-built for collecting substantial and quality samples from strictures in the biliary duct and has been proven to deliver a diagnostic sensitivity of up to 85%.²*



SCAN to Learn More

BX00711652	
Sheath diameter	3mm/9FR
Length	200cm

STERILE

BX00711653	
Sheath diameter	2.5mm/7.5FR
Length	200cm

STERILE



¹ Korc, P and Sherman, S. "ERCP tissue sampling." GIE Journal 2016; 84 (4):L 557-571.

² T.Barrioz, M Wangermex, P. Levillain, M. Beauchant. The Infinity® brush improves the results of brush cytology for malignant biliary strictures. Societe Nationale Francaise de Gastro-Enerlogie (SNFGE). [25-4-2013 10:13:01]

Moray[®] micro forceps

The **Moray micro forceps** is designed to acquire reliable tissue samples from pancreatic cysts, helping lead to a more definitive diagnosis and targeted therapy.¹

- *Serrated jaws that grab tissue² from the wall of pancreatic cysts*
- *Stainless steel spring sheath offers functionality in tortuous positions*

BX00711889	
Sheath diameter	0.80mm
Jaw opening width	4.3mm
Length	230cm



STERIS Endoscopy also offers latex and non-latex **Oracle[®] EUS balloons** that complement the **Moray micro forceps** and are designed to provide a clear view throughout endoscopic procedures.

Visit www.steris.com to view our complete offering.



Moray micro forceps acquiring tissue sample from pancreatic cyst

¹Study data on file at STERIS Endoscopy

²C. Mittal, JC. Obuch, H. Hammad, SA. Edmundowicz, S. Wani, RJ. Shah, BC. Brauer, AR. Attwell, JB. Kaplan, MS. Wagh. "Technical feasibility, diagnostic yield, and safety of micro forceps biopsies during EUS evaluation of pancreatic cystic lesions (with video)." GIE Journal Online, 2018.

recruit tissue

iSnare® system - Lariat® snare

The **iSnare system - Lariat® snare** is ideal for minimizing procedure time and aiding in positive clinical outcomes during submucosal injection polypectomy procedures including EMR (endoscopic mucosal resection) and SAP (saline assisted polypectomy).

- *A two-in-one device with alternating injection needle and snare operated by a multi-functional handle*
- *Unique snare design offers three distinct snare sizes and shapes to address a variety of resection needs for both hot and cold resection*

BX00711084	
Needle gauge	25
Sheath diameter	2.5mm
Length	230cm



Histolock® resection device

The **Histolock resection device** features a stiff monofilament wire to help recruit and resect flat tissue during complex polypectomy procedures.

- *Snare size offers maneuverability for controlled placement and precise resection*

BX00711117 / BX00711871	
Sheath diameter	2.4mm
Length	230cm
Snare size	14 x 27mm



complete resection

Exacto® cold snare

As a dedicated cold snare, the **Exacto snare** is clinically proven to achieve a significantly higher rate of complete resection when using the cold snare polypectomy technique. The unique design offers control and placement for a precise, clean cut when compared to traditional braided snares.^{1, 2}

BX00711115	
Sheath diameter	2.4mm
Length	230cm
Snare width	9mm

- *Enables a clean cut with a thin wire design (0.012"/0.30mm) while maintaining its shape and stiffness*
- *Features a unique, shield shape that maximizes its width for control and placement*
- *9mm mini snare size that facilitates polyp tissue resection without use of cautery*
- *Offers a thin, stiff catheter that decreases buckling while aiding in placement*

7 braided wire configuration offers balance between stiffness and flexibility



Shield shape enables effective control & placement



SCAN to Learn More

¹ Horiuchi A, Hosoi K. "Perspective, randomized comparison of 2 methods of cold snare polypectomy for small colorectal polyps." *Gastrointestinal Endoscopy* (2015): 1-7

² Din S, Ball A. "Cold snare polypectomy: Does snare type influence outcomes?" *Digestive Endoscopy* (2015): 1-6

eTrap[®] polyp trap

Inspired by input from nurses, the **eTrap polyp trap** allows for quick and accurate retrieval of multiple specimens, while safeguarding clinicians from unnecessary exposure to biomaterial.

- *Removable specimen strainers provide little or no biomaterial exposure*
- *Collect multiple polyps with uninterrupted suction*
- *Simple transport and preservation of specimen*

BX00711099

2 specimen trays/unit



specimen captured in
eTrap polyp trap





Padlock Clip® defect closure system

The **Padlock Clip defect closure system** features an over-the-scope clip designed to encircle, lift, close, close and heal tissue within the GI tract.

The Padlock Clip defect closure system...

- *Attaches to the outside of the endoscope*
- *Provides an open and free instrument channel for unhindered endoscope suction*
- *Allows for "push of the thumb" deployment*



Padlock Clip on gastric ulcer



Padlock Clip on colonic polypectomy site



One clip design for applications including – hemostasis and closure of polyp resection sites <1.5cm and GI tract luminal perforations <20mm.

C910001 - Padlock Clip® device	
Endoscope tip diameter	9.5-11mm
Tissue chamber depth	1.0cm
Tissue chamber diameter	1.1cm
Length	162cm

Sterile

C913131* - Padlock Clip Pro-Select® device	
Endoscope tip diameter	11.3-14.0mm
Tissue chamber depth	0.3-1.9cm
Tissue chamber diameter	1.1cm
Length	162cm

Sterile

*Tissue chamber depth varies based on endoscope diameter

Carr-Locke injection needle

Designed to operate in the most tortuous conditions, the **Carr-Locke needle** is ideal for injection therapy of esophageal/gastric strictures, varices, and for endoscopic mucosal resection.

BX00711811 / BX00711813	
Sheath diameter	2.5mm
Length	230cm
Needle projection	5mm
Gauge	25

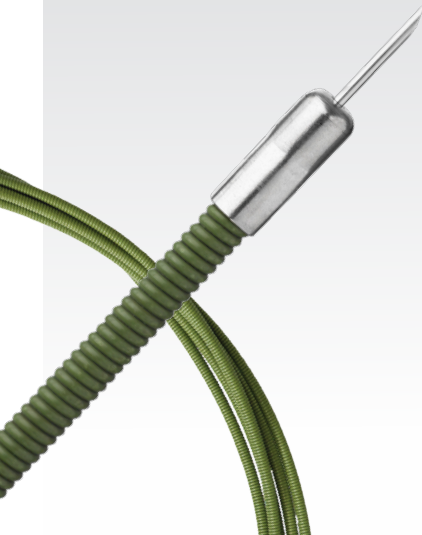
BX00711812	
Sheath diameter	2.5mm
Length	230cm
Needle projection	5mm
Gauge	23

BX00711814	
Sheath diameter	2.5mm
Length	230cm
Needle projection	4mm
Gauge	23

BX00711822	
Sheath diameter	1.8mm
Length	230cm
Needle projection	5mm
Gauge	25

BX00711823	
Sheath diameter	2.5mm
Length	230cm
Needle projection	5mm
Gauge	25

BX00711824	
Sheath diameter	2.5mm
Length	230cm
Needle projection	5mm
Gauge	23



The Carr-Locke injection needle features...

- *stainless steel, spring sheath to help minimize kinking*
- *ultra smooth distal hub is gentle on friable tissue, aids in tamponade and prevents sheath perforations*
- *spring-loaded handle automatically retracts the needle*



Raptor® grasping device

Offering versatility for retrieving stents and a variety of foreign bodies (safety pins, needles, etc).

- *Combines alligator and rat tooth grasper capabilities into one device, increasing gripping ability*
- *Flexible distal catheter operates in a retroflexed position and in side-viewing scopes*



BX00711177

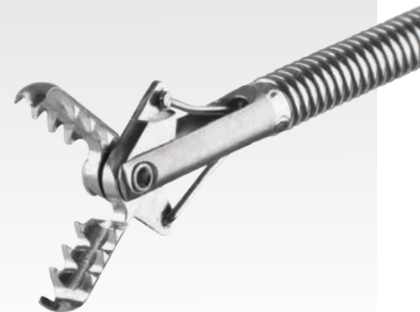
Sheath diameter	2.4mm
Length	230cm

Sterile



Raptor® grasping device - mini

With the same features as the original **Raptor grasping device** - the new mini device offers a smaller hybrid jaw and catheter making it ideal for tight, torqued positions, and procedures requiring an ultra-slim endoscope.



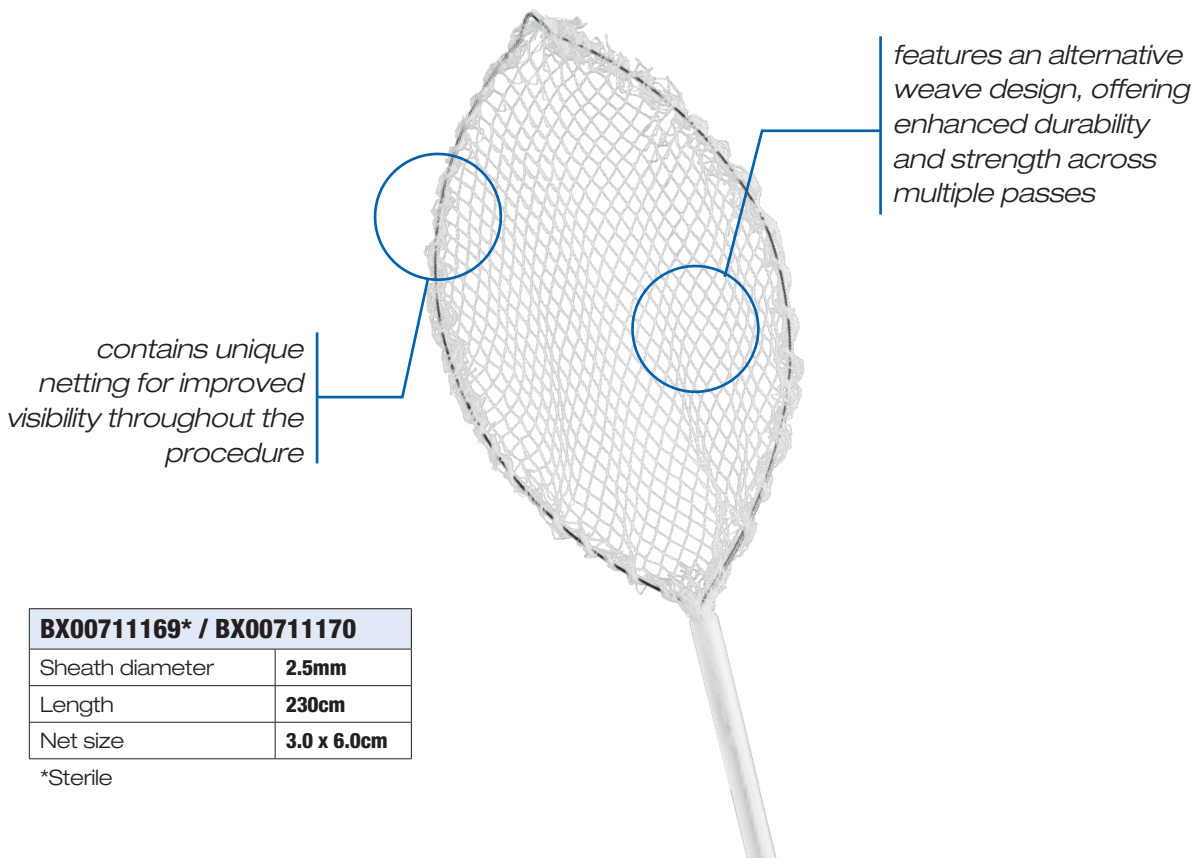
BX00711178

Sheath diameter	1.9mm
Length	200cm

Sterile

Roth Net® retriever - select

As the leader in foreign body and polyp retrieval for over 25 years, STERIS Endoscopy is proud to expand our extensive Roth Net retriever portfolio with the **Roth Net retriever – select.**



BX00711169* / BX00711170

Sheath diameter	2.5mm
Length	230cm
Net size	3.0 x 6.0cm

*Sterile

infection prevention

BioGuard® air/water & suction valves

The **BioGuard air/water & suction valves** offer an alternative option to manual cleaning and reprocessing and are available in 2, 3, and 4-piece kit options.

The single-use BioGuard air/water & suction valve kits...

- *Provide consistent performance - use a new kit for each procedure*
- *Support adherence to industry guidelines which require traceability with a specific endoscope¹*



BioGuard® air/water cleaning adapter - Olympus

Introducing the new disposable **BioGuard air/water cleaning adapter** which is designed specifically for Olympus GI endoscopes*, offering a single-use option that flushes the air/water channel during the bedside cleaning process

BX00711788



The single-use BioGuard air/water cleaning adapter...

- *Reduces the need for manual reprocessing and to be tracked with a specific endoscope*
- *Offers a unique appearance and warning tag to prevent use during patient procedures*
- *Individually packaged to ensure use only during the bedside pre-cleaning process*

¹ANSI/AAMI ST91: 2015 Flexible and semi-rigid endoscope processing in health care facilities. 20, 23, 25, 31, 32, 33.

*Compatible with Olympus GI endoscopes excluding EUS echoendoscopes that utilize a balloon channel.

effective cleaning

DuoSwift® combination squeegee brush

The **DuoSwift combination squeegee brush** features a tapered nylon brush on the leading end and a series of squeegees on the trailing end to help remove liquid and debris from flexible endoscopes.

- *Bristled brush helps loosen and remove bioburden with friction*
- *Squeegee pulls liquid and residue from the endoscope channel*
- *Unique design helps maximize cleaning touches within compatible endoscope channels*



*Comparative cleaning brush tests show that the DuoSwift brush can successfully remove most bioburden in one pass.**

BX00711618 / BX00711619	
Channel size	2.8-7.0mm
Sheath diameter	1.7mm
Length	230cm
Bristle diameter	5-7mm
Valve control head	10mm (included in BX00711619 only)

*Biotest Laboratories. "Efficacy Testing of Cleaning Brushes for US Endoscopy." 2016. Test Report on file with STERIS Endoscopy.



product information

Product Number	Description	Units/Box
Bleed Management and Irrigation		
BX00711811	Carr-Locke injection needle	5
BX00711812	Carr-Locke injection needle	5
BX00711813	Carr-Locke injection needle	5
BX00711814	Carr-Locke injection needle	5
BX00711822	Carr-Locke injection needle	5
BX00711823	Carr-Locke injection needle	10
BX00711824	Carr-Locke injection needle	10
C910001	Padlock Clip® defect closure system	1
C913131	Padlock Clip Pro-Select® defect closure system	1
GI Procedure Products		
BX00711780	BioGuard® air/water & suction valves - 2 piece kit	50
BX00711783	BioGuard® air/water & suction valves - 3 piece kit kit includes BioShield® biopsy valve (BX00711129)	50
BX00711784	BioGuard® air/water & suction valves - 4 piece kit kit includes BioShield® biopsy valve (BX00711129) and Torrent® scope connector (BX00711570)	50
BX00711788	BioGuard® air/water cleaning adapter - Olympus	50
BX00711618	DuoSwift® combination squeegee brush	50
BX00711619	DuoSwift® combination squeegee brush with valve/control head brush	50
ERCP		
BX00711652	Infinity® ERCP sampling device - 9FR	5
BX00711653	Infinity® ERCP sampling device - 7.5FR	5
BX00711660	Histoguide® wire-guided forceps	5
Foreign Body Management		
BX00711177	Raptor® grasping device	5
BX00711178	Raptor® grasping device - mini	5
BX00711169	Roth Net® retriever - select - sterile	10
BX00711170	Roth Net® retriever - select	5
Polypectomy and Tissue Acquisition		
BX00711110	CoinTip™ snare	10
BX00711099	eTrap® polyp trap	25
BX00711115	Exacto® cold snare	10
BX00711084	iSnare® system - Lariat® snare	5
BX00711871	Histolock® resection device	3
BX00711117	Histolock® resection device	10
BX00711889	Moray® micro forceps	3
BX00711169	Roth Net® retriever - select - sterile	10
BX00711170	Roth Net® retriever - select	5



DIAGMED

HEALTHCARE

a STERIS company

Olympus® is a registered trademark of Olympus Optical, Inc.
Fujinon® is a registered trademark of FujiFilm Corporation.
©2021 STERIS Endoscopy or its affiliates. All rights reserved.
Unless otherwise indicated, all marks denoted with ® or ™ are registered with the U.S. Patent and Trademark Office, or are trademarks owned by STERIS or its affiliates.

Lumley Close, Thirsk Industrial Park,
Thirsk, North Yorkshire, England, YO7
3TD 01845 526660 |
info@diagmed.co.uk |
diagmed.healthcare

Follow us:



760396 Rev. M